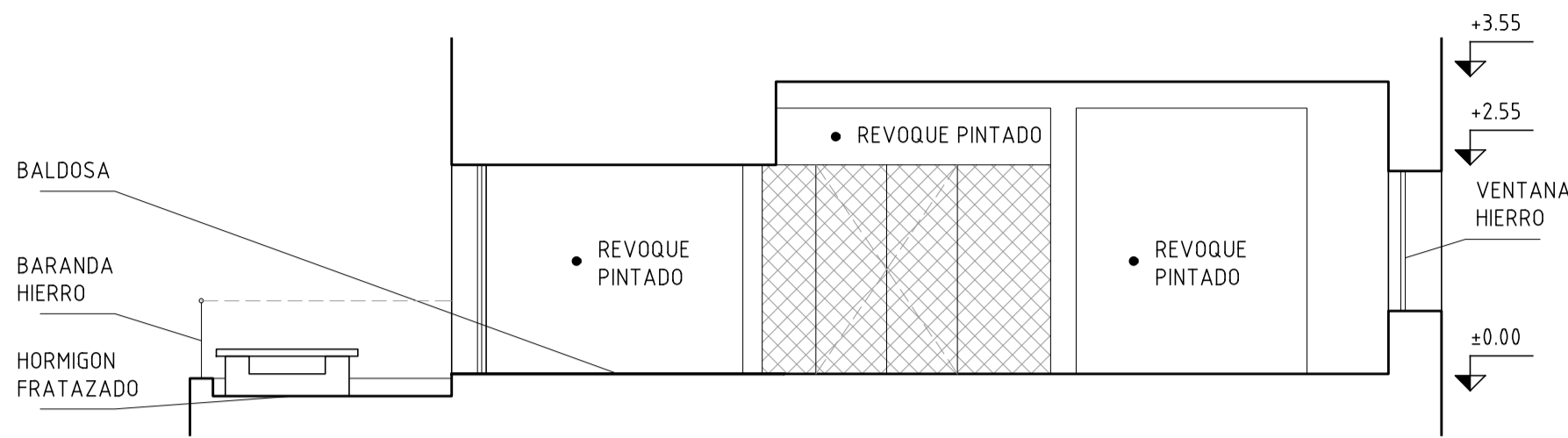
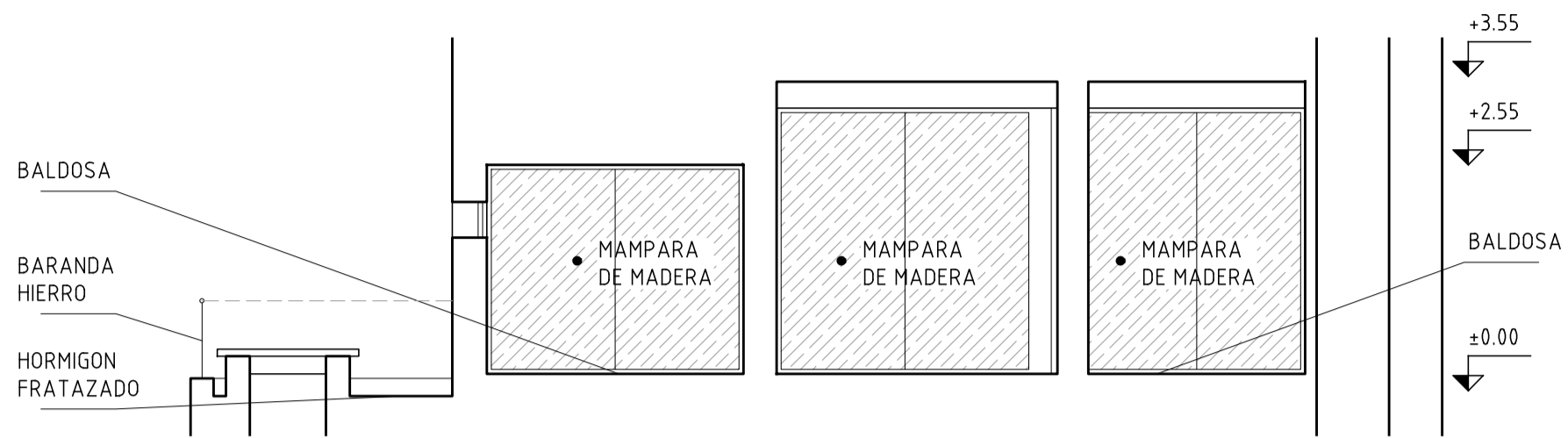


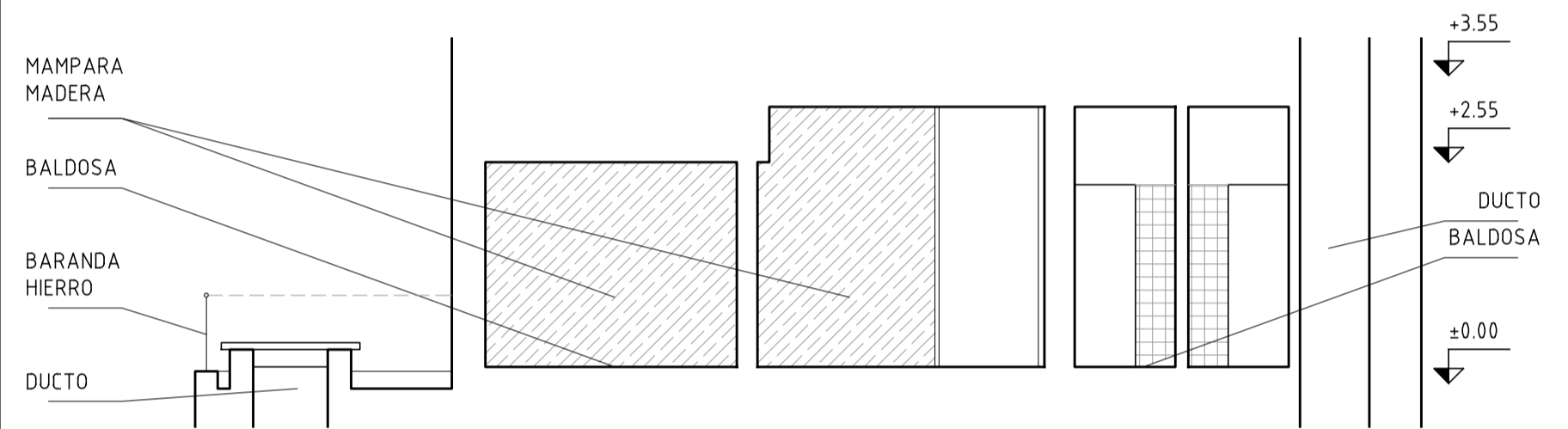
CORTE A-A



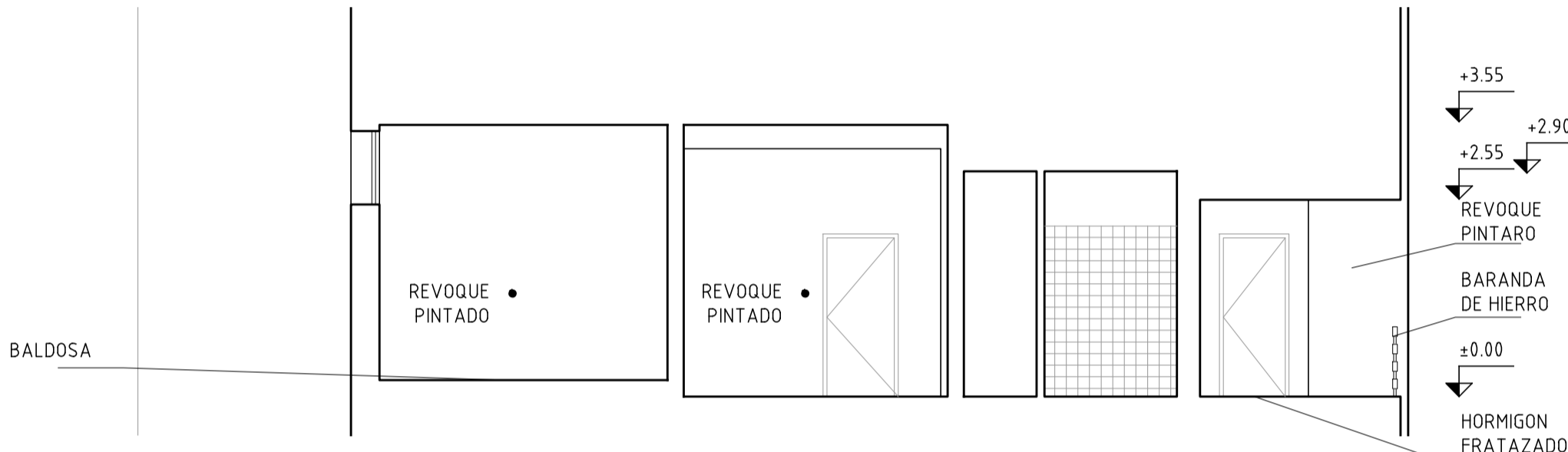
CORTE B-B



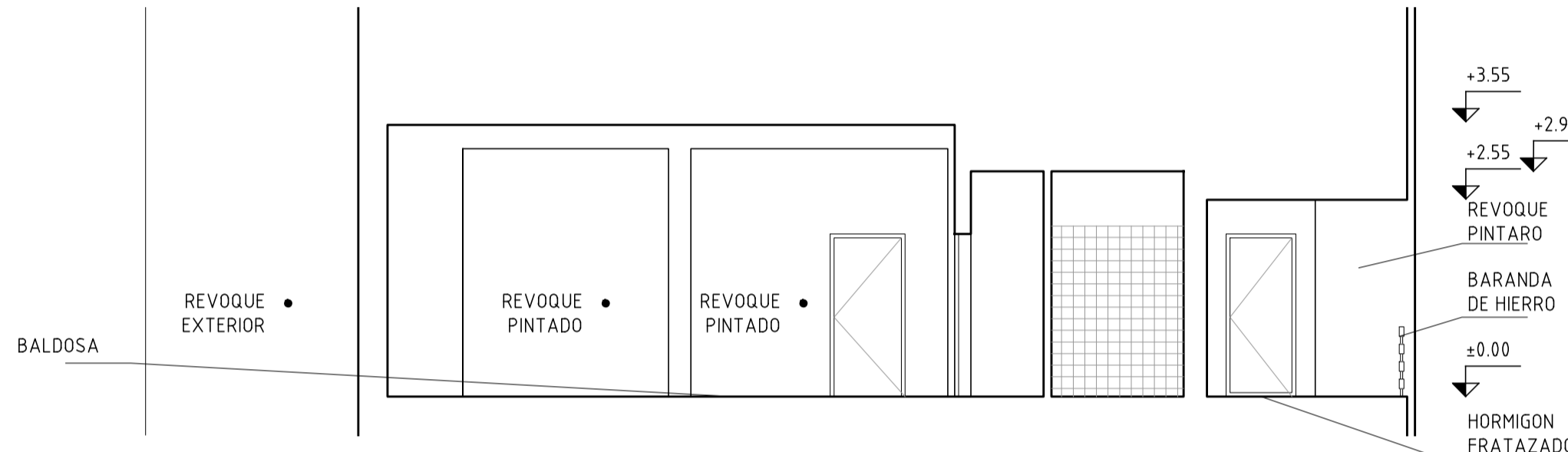
CORTE C-C



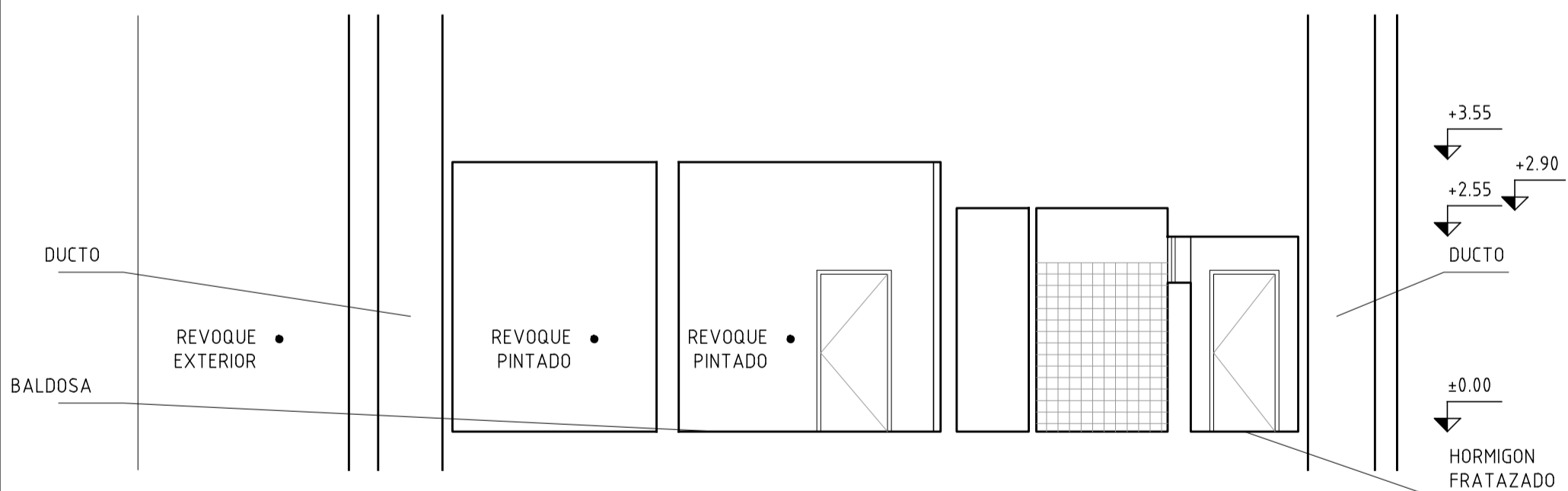
CORTE D-D



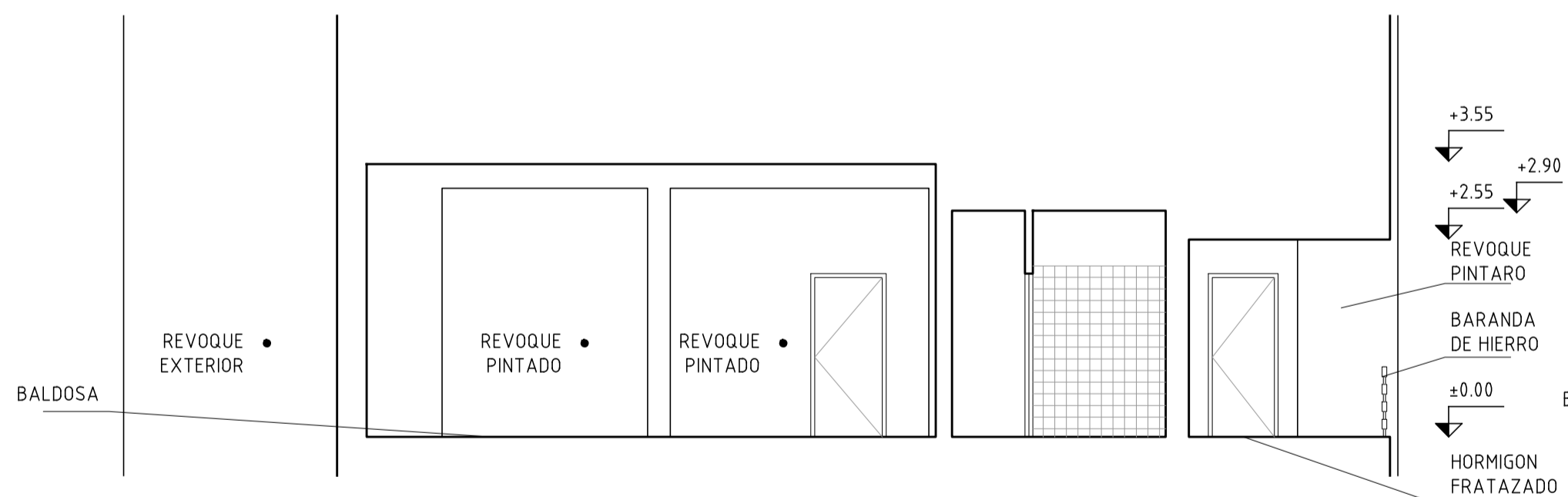
CORTE E-E



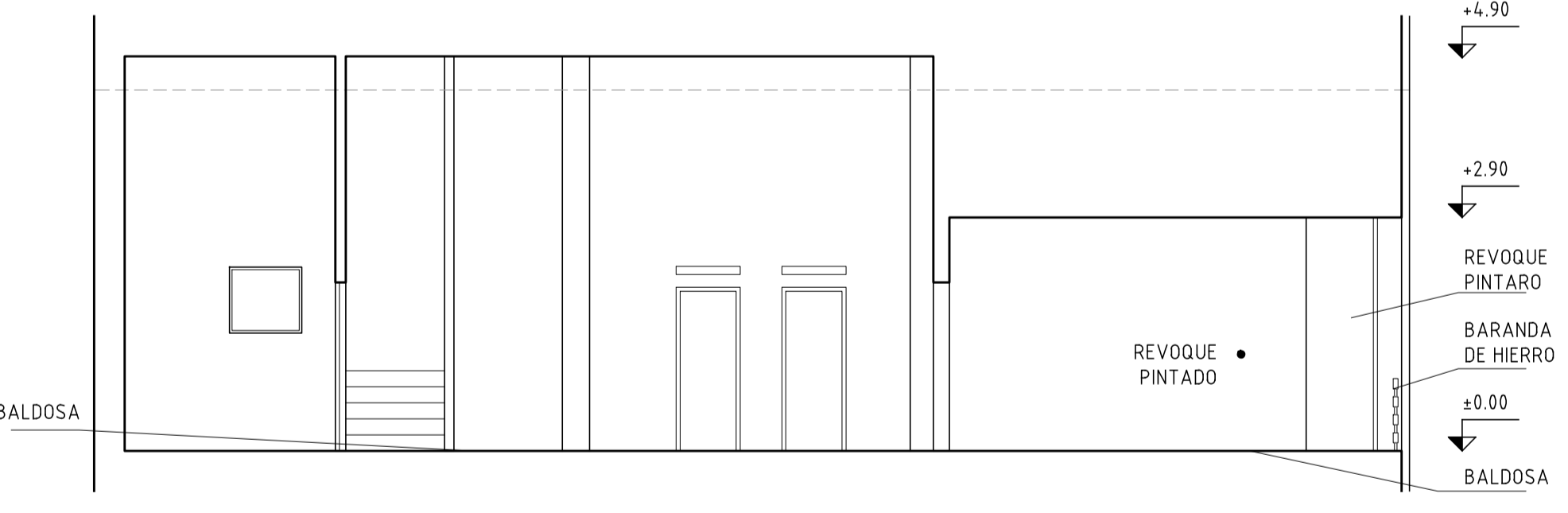
CORTE F-F



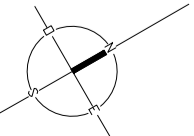
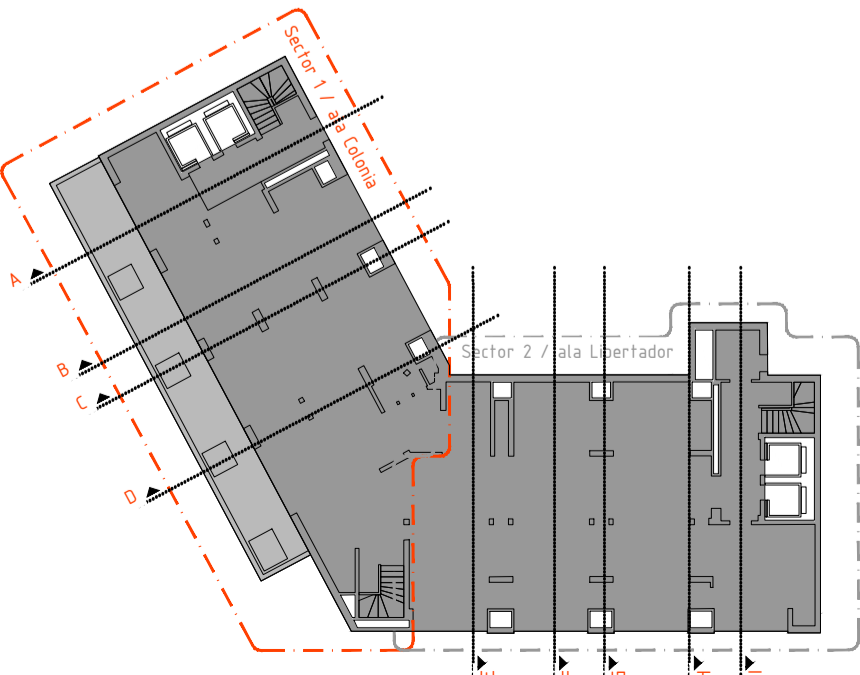
CORTE G-G



CORTE H-H



CORTE I-I



ANEP AREA DE PROYECTOS		
DIRECCIÓN SECTORIAL DE INFRAESTRUCTURA		
CONSEJO DIRECTIVO CENTRAL		
OBRA: EDIFICIO CO.DI.CEN	LOCALIDAD: MONTEVIDEO	FECHA: 2021
CALLE: Libertador 1409 Esq. Colonia	DEPARTAMENTO: MONTEVIDEO	ESCALA: 1:75
PLANO DE: RELEVAMIENTO NIVEL 12		LÁMINA No: L 36
CORTES A-B-C-D-E-F-G-H-I		
ARQUITECTO: SANDRA BOTO - GUSTAVO DOS SANTOS CRUZ	FIRMA:	
AYTE. INGENIERO: DR. DAVID FLORES - ARQ. CARLA FIRRO	FIRMA:	
TECNICO:	FIRMA:	
DEBUJANTE:	FIRMA:	